

# NORTHEAST BRITISH COLUMBIA Aboriginal Community Health Resources

UPDATED NOVEMBER 2019



Photo credit: Teepees near Fort St. John (C.Brinkworth)

## TABLE OF CONTENTS

Introduction.....	3
Aboriginal Patient Liaisons .....	4
Map of Northeast British Columbia.....	6
Blueberry River First Nations.....	7
Doig River First Nation .....	8
Fort Nelson First Nation.....	9
Halfway River First Nation .....	10
Kelly Lake .....	11
Prophet River First Nation .....	12
Saulteau First Nations .....	13
West Moberly First Nations .....	14
Aboriginal organizations and resources .....	15
Sharing patient information with health care staff in First Nations communities .....	16

## INTRODUCTION

*Dane wuujo ghadaa*  
People Living Good

This document is for health care providers in the Northeast BC region. It was developed to give information on the health services available in each Aboriginal community, which will assist in appropriate discharge planning for people's seamless transition from hospital to their home community.

Aboriginal people who live in Aboriginal communities in the north receive many of their acute care services at Northern Health (NH) hospitals and facilities. After being discharged from a NH facility, people return to their home community where follow-up services are often provided by the community health care staff.

Knowing the services available in a community will support appropriate discharge planning. You will notice that each community does not have the same services available or hours of operation.

It is helpful for families and/or health care staff in communities to be informed of the planned date and time of a person's discharge so that transportation can be arranged. A patient's home community may be some distance from the NH facility with no access to public transportation options.

It is intended that this document will be updated periodically and that each community will add additional services and other information as appropriate.



Photo credit: Beaded moccasins (K. Mitchell-Foster)

## ABORIGINAL PATIENT LIAISONS

Aboriginal Patient Liaisons are an important part of health care teams. They work to ensure Aboriginal people and their families have access to high quality, culturally safe and appropriate care.

### North Peace

Aboriginal Patient Liaison

#### **Fort St. John and Fort Nelson**

8407 - 112 Avenue

Fort St. John BC V1J 0J5

Office: 250-261-7418

**April.Davis@northernhealth.ca**

### South Peace

Aboriginal Patient Liaison

#### **Chetwynd Primary Care Clinic**

PO Box 148, 5125 – 50th Street SW (across from Post Office)

Chetwynd BC V8J 2A6

Office: 250-788-7202

**Oshen.Walker@northernhealth.ca**

Aboriginal Patient Liaison

#### **Dawson Creek Health Clinic**

11100 13th Street

Dawson Creek BC V1G 3W8

Office: 250-782-6190

**Margaret.Mcgillis@northernhealth.ca**

### Prince George

Aboriginal Patient Liaison

#### **University Hospital of Northern BC**

1478 Edmonton Street

Prince George, BC V2M 1S2

Phone: 778-349-1348

**Carol.Ryan@northernhealth.ca**

### BC Cancer Agency, Centre for the North

1215 Lethbridge Street

Prince George BC V2M 7E9

Phone: 250-645-7300

Toll-free (in BC): 1-855-775-7300

### Grande Prairie, AB

Indigenous Health Liaison

#### **Queen Elizabeth II Hospital**

10409 98 Street

Grande Prairie, AB T8V 2E8

Phone: 780-538-7125

**Beverly.McLeod2@albertahealthservices.ca**



Photo credit: Moberly Lake in the Fall, 2016 (Alisa Froh)



Photo credit: Moberly Lake, 2016 (Alisa Froh)



This map illustrates the Northeast region of British Columbia, Canada, highlighting the territories of several First Nations. The map is divided into two main sections: the **NORTHEAST** region to the north and the **NORTHERN INTERIOR** region to the south, separated by a thick blue line representing a major geographical boundary. Major roads are shown in red, with route numbers 97, 77, and 83. Key locations marked with black squares include Fort Nelson, Fort St. John, Dawson Creek, Chetwynd, Kelly Lake, Tumbler Ridge, and Prince George. First Nations territories are indicated by blue squares and labels: Fort Nelson First Nation, Prophet River First Nation, Blueberry River First Nations, Doig River First Nation, Halfway River First Nation, Saulteau First Nations, West Moberly First Nations, and Kelly Lake. The map also shows various lakes (e.g., Williston Lake, Tumbler Lake, Stuart Lake, Babine Lake, Trembleur Lake, Chuchil Lake, Tcherilo Lakes, Takla Lake, Francis Lake, Carp Lake) and rivers (e.g., Peace River, Chukchee River, Williston River, Stuart River, Babine River, Trembleur River, Francis River). The map is oriented with North at the top, indicated by the 'N W T' label in the top right corner.

**Language:** Dane-zaa and Cree

Services	Availability
Physician Clinic	Twice a month
First Nations Health Authority Nurse	1-2 visits a week
Family Support Worker	Monday-Friday 9:00-4:30
Patient Travel	Monday-Friday 9:00-4:30
Home visits	Monday-Friday 9:00-4:30 (when needed)
Mobile Optometry clinic	Once a year
Mobile Clinic MST	Monday - Tuesday weekly
Counselling addictions	Twice a month
Meals on Wheels	Monday-Friday
Mobile diabetes unit	Annually
Flu Shot Clinic	Once a year
PAP clinic	As required
Community Safeguard Program	Christmas break and spring break





## DOIG RIVER FIRST NATION

**Health Director:** Tereee Walton

**Community Health Rep:** Margaret Davis

**Hours of Service:** 9:00-4:30 Monday-Thursday

**Phone:** 250-827-3776

**Fax:** 250-827-3778

**Distance from FSJ:** 80 km

**Language:** Dane-zaa

Services	Availability
Physician Clinic	Twice a month
First Nations Health Authority Nurse	1-2 visits a week
Patient Travel	Monday-Thursday 9:00-4:30
Drug and Alcohol Counsellor	Twice monthly
Youth Mental Health Clinician	When needed
Family Support worker	Monday-Friday 9:00-4:30
Flu Shot Clinic	Once a year
Counselling	Twice weekly
Optometry Clinic	Once a year
PAP Clinic	As required

## FORT NELSON FIRST NATION

> [www.fortnelsonfirstnation.org](http://www.fortnelsonfirstnation.org)

**Health Director:** Roberta Dendys

**Community Health Rep:** Samantha Kotchea

**Hours of Service:** 8:30-4:30 Monday-Friday

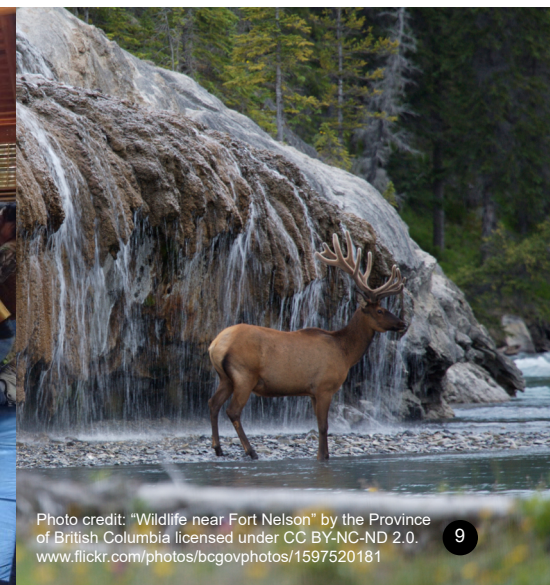
**Phone:** 250-774-2300

**Fax:** 250-774-7989

**Distance from FN:** 7 km, 4 hours from FSJ

**Language:** Dene and Cree

Services	Availability
Physician Clinic	
Registered Nurse	Monday - Friday 8:30-4:30
Patient Travel	Monday-Friday 8:30-4:30
Youth Mental Health Clinician	When needed
Counsellors	Monday-Friday 8:30-4:30
Flu Shot Clinic	Once a year
Home Support	Every day 8:30-4:30
Home Care Aids	Every day evenings
Family Support Worker	Monday-Friday 8:30-4:30
Youth Support Worker	Monday-Friday 8:30-4:30
Optometry clinic	Once a year





## HALFWAY RIVER FIRST NATION

> [www.hrfn.ca](http://www.hrfn.ca)

**Health Director:** Thomasina Spike

**Community Health Rep:** Francis Field

**Hours of Service:** 9:00-4:00 Monday-Friday

**Phone:** 250-772-5059

**Fax:** 250-772-5117

**Distance from FSJ:** 110km

**Language:** Dane-zaa

Services	Availability
Physician Clinic	Twice a month
First Nations Health Authority Nurse	1-2 visits a week
Patient Travel	Monday-Friday 9:00-4:30
Mental Health Clinician	Once a week
Mobile Clinic MST	Once a week
Flu Shot Clinic	Once a year
PAP Clinic	As required

## KELLY LAKE

> [www.kellylakecreenation.com](http://www.kellylakecreenation.com)

Kelly Lake Community Centre Society

#107 Kelly Lake Road

Kelly Lake, BC

**Phone:** 780-356-2419 or 780-356-2025

**President:** Lois Duke

**Phone:** 780-832-0815

**Vice President:** Tania Calliou-Horseman

**Phone:** 780-518-3082

**Activities Coordinator:** Monique Hommy

**Phone:** 780-831-5331



Photo credit: Teepees in Northeast BC, 2016 (Alisa Froh)



Photo credit: "Fort St. John" by the Province of British Columbia licensed under CC BY-NC-ND 2.0. [www.flickr.com/photos/bcgovphotos/15791242939](http://www.flickr.com/photos/bcgovphotos/15791242939)

## PROPHET RIVER FIRST NATION

> [www.prophetriverfn.com](http://www.prophetriverfn.com)

**Health Director:** Tanya McLeod

**Community Health Rep:** Donna Tsakoza

**Hours of Service:** 9:00-4:30 Monday-Friday

**Phone:** 250-773-6555

**Distance to Fort Nelson:** 100 km

**Distance to FSJ:** 292 km

**Language:** Dane-zaa

Services	Availability
Physician Clinic	
Paramedic	Wednesday 2:00-4:00
Patient Travel	Monday-Friday 9:00-4:30
Youth Mental Health Clinician	When needed
Social Worker	3 days a week
Optometry Clinic	Once a year
Flu Shot Clinic	Once a year
Homemaking	As needed
First Responder Program	7 days a week

## SAULTEAU FIRST NATIONS

> [www.saulteau.com](http://www.saulteau.com)

**Health Director:** Sarah Gauthier

**Community Health Rep:** Heather Lirette

**Hours of Service:** 8:00-4:30 Monday-Thursday

**Phone:** 250-788-7280

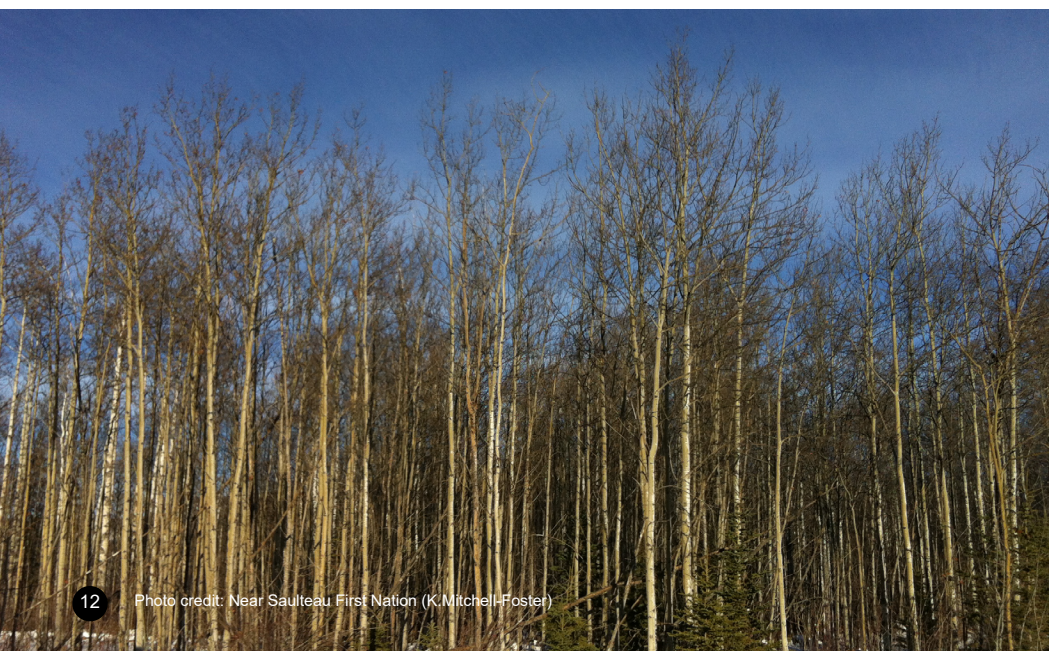
**Fax:** 250-788-7251

**Distance from Chetwynd:** 25 kms

**Distance from FSJ:** 1.5 hours

**Language:** Cree and Saulteau

Services	Availability
Physician Clinic	Every other Saturday
Community Health Nurse	Monday-Thursday 8:00-4:30
Community Health Rep	Tuesday-Wednesday 8:00-4:30
Patient Travel	Monday-Thursday 8:00-4:30
Mental Health and Addictions Worker	Monday-Thursday 8:00-4:30
Home Support	Mondays & Thursdays 8:00-4:30
Home Care Nurse	Monday-Thursday 8:00-4:30
Family Support Worker	Monday-Thursday 8:00-4:30
Home Making	Monday-Thursday 8:00-4:30
Family Life Skills Worker	Monday-Thursday 8:00-4:30
Accupuncturist	Once every 2 months
Foot Clinic	Once every 2 months





## WEST MOBERLY FIRST NATIONS

> [www.westmo.org](http://www.westmo.org)

**Health Director:** Patricia Hoard

**Community Health Rep:** Clorissa Bigfoot

**Hours of Service:** 8:00-4:30 Monday-Friday

**Phone:** 250-788-3622

**Fax:** 250-788-1624

**Distance from Chetwynd:** 30 kms

**Distance from FSJ:** 1.5 hours

**Language:** Cree and Dane-zaa

Services	Availability
Physician Clinic	Can access Saulteau Physician Clinic
Registered Nurse	Twice a month
Patient Travel	Monday-Friday 8:00-4:30
Youth Mental Health Clinician	When needed
Flu Shot Clinic	Once a year
Home Support	Twice a week
Family Support Worker	Monday-Friday 8:00-4:30
Optometry clinic	Once a year



## ABORIGINAL ORGANIZATIONS AND RESOURCES

### Fort St. John

Fort St. John Friendship Center ..... 250-785-1541  
 Fort St. John Métis Society ..... 250-785-1541  
 Native Court Worker ..... 1-877-811-1190 ext. 376  
 Treaty 8 Tribal Association ..... 250-785-0612  
 Fort St. John Native Housing Society ..... 250-785-4900  
 North East Native Advancing Society (NENAS) ... 250-785-0887  
 Nenan Dane zaa Deh Zona Children and  
 Family Services ..... 250-785-2151  
 FNHA General Inquires ..... 1-855-550-5454  
 FNHA Community Engagement Coordinator ..... 778-256-5072  
 FNHA Fort St. John Nursing Office ..... 250-787-0298  
 Off-Reserve Non-Insured Health Benefits 250-785-0612 ext.228  
 Mental Wellness and Substance Use  
 Mobile Support Team..... 250-261-3201

### Dawson Creek

Nawican Friendship Center ..... 250-782-5202  
 Aboriginal Family Resources Society .....250-782-1169  
 Northeast Métis Society ..... 250-782-2710  
 Nenan Dane-zaa Deh Zona Children and  
 Family Services ..... 250-787-2151

### Chetwynd

Tansi Friendship Center ..... 250-788-2996  
 Moccasin Flats Métis Society ..... 250-401-7296

### Fort Nelson

Fort Nelson Aboriginal Friendship Society ..... 250-774-2993  
 Nenan Dane-zaa Deh Zona Children and  
 Family Services ..... 250-787-2151  
 Northern Rockies Aboriginal Women's Society  
 (NRAWS)..... 250-233-8920

## ABORIGINAL HEALTH

# Sharing patient information with health care staff in First Nations communities

## GUIDELINES FOR NORTHERN HEALTH

## INTRODUCTION

This document will provide clarification about sharing patient information for First Nations people who live in First Nations communities. Communicating relevant patient information to health care staff in First Nations communities is very important for the continuity of services and to avoid risks to the health and safety of the people to be served.

First Nations people who live in First Nations communities in the north receive many of their acute care services within Northern Health (NH) hospitals and facilities. After being discharged from a NH facility, people return to their home community where follow-up services are provided by the health care staff in the First Nations community.

Informing health care staff in First Nations communities that a person has been discharged and is returning home allows for timely follow-up. Providing specific information about the person's follow-up needs ensures safe and continuous care for that person and their family.

You can and should share information with health care providers in First Nations communities, once a patient has given verbal consent for you to do so.

## CONSENT TO SHARE PATIENT INFORMATION<sup>1</sup>

In order to share relevant patient information with health care providers in First Nations communities, confirm with the patient what community they will be returning to after leaving the hospital.

1. Explain the importance of sharing relevant information with the community health care staff for their safety and continuity of care.
2. Ask the patient if you can contact the health care staff (indicate the provider's title/position ) in the patient's community in order to share relevant information and to include the health care staff in planning the patient's transition home and their follow-up care.
3. Document the conversation and the outcome in the patient file.

## ABORIGINAL PATIENT LIAISONS

Ten Aboriginal Patient Liaisons<sup>2</sup> (APLs) are located across the north at the following NH facilities and are available to assist with discharge planning, patient transitions, and connecting with First Nations and Aboriginal communities:

Bulkeley Valley District Hospital	. . . . .	250-847-5211
Chetwynd Hospital and Health Centre	. . .	250-788-7300
Dawson Creek and District Hospital	. . . .	250-782-8501
Fort St. John Hospital	. . . . .	250-261-7418
GR Baker Memorial Hospital	. . . . .	250-985-5812
Lakes District Hospital	. . . . .	250-692-2474
Mills Memorial Hospital	. . . . .	250-638-4085
Prince Rupert Regional Hospital	. . . . .	250-624-2171
University Hospital of Northern BC	. . . .	250-565-2364
Wrinch Memorial Hospital	. . . . .	250-842-4666

APLs and Aboriginal Patient Navigators are also located in regional health authorities throughout the province to assist with patient transfers to facilities outside of NH.



**northern health**  
the northern way of caring

## ENDNOTES

1 Health care information can be shared as permitted by 33.2(a) and 34 of the Freedom of Information and Protection of Privacy Act of British Columbia: [www.bclaws.ca/Recon/document/ID/freeside/96165\\_00](http://www.bclaws.ca/Recon/document/ID/freeside/96165_00)

2 For up-to-date contact information for Aboriginal Patient Liaisons, visit: [northernhealth.ca/YourHealth/AboriginalHealth/WhatWeDo/AboriginalPatientLiaisonProgram.aspx](http://northernhealth.ca/YourHealth/AboriginalHealth/WhatWeDo/AboriginalPatientLiaisonProgram.aspx)

***This document has been reviewed by the Northern Health Privacy Office and the Northern Health Risk and Compliance Office.***

*Acknowledgement to Aboriginal Health, Interior Health, for sharing Brief Facts: Patient Information Sharing with First Nations Health Care Staff.*

## Digital Access

This brochure was last updated in November 2019. Up-to-date information, including any staffing changes, is accessible online via the Indigenous Health website: [www.indigenoushealthnh.ca/initiatives/AHICs/northeast](http://www.indigenoushealthnh.ca/initiatives/AHICs/northeast)

## Acknowledgements

This resource was developed by the Northeast Aboriginal Health Improvement Committee (AHIC) with financial support from Indigenous Health, Northern Health. The views and information within do not necessarily represent those of Northern Health.

To request copies of this resource please contact:

April Davis  
Aboriginal Patient Liaison  
(250) 261-7418  
[April.Davis@northernhealth.ca](mailto:April.Davis@northernhealth.ca)



© Northeast Aboriginal Improvement Committee. This publication may be reproduced for non-commercial use, in full or in part, without permission provided the source is fully acknowledged.

Recommended citation: Indigenous Health. (2019). *Aboriginal Patient Liaison: Regional*. Prince George, BC: Northern Health.



