

# NORTHEAST BRITISH COLUMBIA Aboriginal Community Health Resources

UPDATED MARCH 2019



## TABLE OF CONTENTS

Introduction.....	3
Aboriginal Patient Liaisons .....	4
Map of Northeast British Columbia.....	6
Blueberry River First Nations.....	7
Doig River First Nation .....	8
Fort Nelson First Nation.....	9
Halfway River First Nation.....	10
Kelly Lake .....	11
Prophet River First Nation .....	12
Saulteau First Nations .....	13
West Moberly First Nations .....	14
Aboriginal Organizations and Resources .....	15
Sharing patient information with health care staff in First Nations communities .....	16

## INTRODUCTION

*Dane wuujo ghadaa*  
People Living Good

This document is for health care providers in the Northeast BC region. It was developed to give information on the health services available in each Aboriginal community, which will assist in appropriate discharge planning for people's seamless transition from hospital to their home community.

Aboriginal people who live in Aboriginal communities in the north receive many of their acute care services at Northern Health (NH) hospitals and facilities. After being discharged from a NH facility, people return to their home community where follow-up services are often provided by the community health care staff.

Knowing the services available in a community will support appropriate discharge planning. You will notice that each community does not have the same services available or hours of operation.

It is helpful for families and/or health care staff in communities to be informed of the planned date and time of a person's discharge so that transportation can be arranged. A patient's home community may be some distance from the NH facility with no access to public transportation options.

It is intended that this document will be updated periodically and that each community will add additional services and other information as appropriate.



Photo credit: Beaded moccasins (K. Mitchell-Foster)

## ABORIGINAL PATIENT LIAISONS

Aboriginal Patient Liaisons are an important part of health care teams. They work to ensure Aboriginal people and their families have access to high quality, culturally safe and appropriate care.

### North Peace

Vacant  
Aboriginal Patient Liaison  
Fort St. John and Fort Nelson  
8407 - 112 Avenue  
Fort St. John BC V1J 0J5  
Office: 250-261-7418

### South Peace

Aboriginal Patient Liaison  
Chetwynd Primary Care Clinic  
PO Box 148, 5125 – 50th Street SW (across from Post Office)  
Chetwynd BC V8J 2A6  
Office: 250-788-7202  
oshen.walker@northernhealth.ca

Aboriginal Patient Liaison  
Dawson Creek Health Clinic  
11100 13th Street  
Dawson Creek BC V1G 3W8  
Office: 250-782-6190  
margaret.mcgillis@northernhealth.ca

### Prince George

Aboriginal Patient Liaison  
University Hospital of Northern BC  
1478 Edmonton Street  
Prince George, BC V2M 1S2  
Phone: 778-349-1348  
APLW@northernhealth.ca

BC Cancer Agency, Centre for the North  
1215 Lethbridge Street  
Prince George BC V2M 7E9  
Phone: 250-645-7300  
Toll-free (in BC): 1-855-775-7300

### Grande Prairie, AB

Indigenous Health Liaison  
Queen Elizabeth II Hospital  
10409 98 Street  
Grande Prairie, AB T8V 2E8  
Phone: 780-538-7125  
Beverly.McLeod2@albertahealthservices.ca



Photo credit: Moberly Lake in the Fall, 2016 (Alisa Froh)



Photo credit: Moberly Lake, 2016 (Alisa Froh)





## MAP OF NORTHEAST BRITISH COLUMBIA

## BLUEBERRY RIVER FIRST NATIONS

Health Director: Tammy Baskin

Community Health Rep: Lillian Apsassin

Hours of Service: 9:00-4:30 Monday-Friday

Phone: 250-630-2181 or 250-630-2800

Fax: 250-630-2588

Distance from FSJ: 87 km

Language: Beaver and Cree

Services	Availability
Physician Clinic	Twice a month
First Nations Health Authority Nurse	1-2 visits a week
Family Support Worker	Monday-Friday 9-4:30
Patient Travel	Monday-Friday 9-4:30
Home visits	Monday-Friday 9-4:30 (when needed)
Mobile Optometry clinic	Once a year
Youth Mental Health Clinician	Once a week
Counselling	Twice a month
Meals on Wheels	Monday-Friday
Homemaking	Monday-Friday
First Responder Program	7 days a week
Flu Shot Clinic	Once a year
PAP clinic	As required
Community Safeguard Program	Christmas Break and Spring Break



## DOIG RIVER FIRST NATION

Health Director: N/A

Community Health Rep: Margaret Davis

Hours of Service: 9:00-4:30 Monday-Thursday

Phone: 250-827-3776

Fax: 250-827-3778

Distance from FSJ: 80 km

Language: Beaver

Services	Availability
Physician Clinic	Twice a month
First Nations Health Authority Nurse	1-2 visits a week
Patient Travel	Monday-Thursday 9-4:30
Drug and Alcohol Counsellor	Twice monthly
Youth Mental Health Clinician	When needed
Family Support worker	Monday-Friday 9-4:30
Flu Shot Clinic	Once a year
Counselling	Once a week
Optometry Clinic	Once a year
PAP Clinic	As required

## FORT NELSON FIRST NATION

Health Director: Roberta Dendys

Community Health Rep: Lorraine Behn

Hours of Service: 9:00-4:30 Monday-Friday

Phone: 250-774-2300

Fax: 250-774-7989

Distance from FN: 7 km, 4 hours from FSJ

Language: Dene and Cree

Services	Availability
Physician Clinic	
Registered Nurse	Vacant position
Patient Travel	Monday-Friday 9-4:30
Youth Mental Health Clinician	When needed
Counsellors	Monday-Friday 8:30-4:30
Flu Shot Clinic	Once a year
Home Support	Every day 8:30-4:30
Home Care Aids	Every day evenings
Family Support Worker	Monday-Friday 8:30-4:30
Youth Support Worker	Monday-Friday 8:30-4:30
Optometry clinic	Once a year



Photo credit: View from the Peace River Highway in Fall (K.Mitchell-Foster)



Photo credit: Doig Days, 2015 (Alisa Froh)



Photo credit: Fort Nelson Hand Games, 2015 (Alisa Froh)



Photo credit: "Wildlife near Fort Nelson" by the Province of British Columbia licensed under CC BY-NC-ND 2.0. [www.flickr.com/photos/bcgovphotos/1597520181](http://www.flickr.com/photos/bcgovphotos/1597520181)



## HALFWAY RIVER FIRST NATION

Health Director: Thomasina Spike

Community Health Rep: Francis Field

Hours of Service: 9:00-4:30 Monday-Friday

Phone: 250-772-5059

Fax: 250-772-5117

Distance from FSJ: 110km

Language: Beaver

Services	Availability
Physician Clinic	Twice a month
First Nations Health Authority Nurse	1-2 visits a week
Patient Travel	Monday-Friday 9-4:30
Youth Mental Health Clinician	Once a week
Drug and Alcohol Counsellor	Twice a month
Flu Shot Clinic	Once a year
PAP Clinic	As required

## KELLY LAKE

Kelly Lake Community Centre Society

#107 Kelly Lake Road

Kelly Lake, BC

Phone: 780-356-2419 or 780-356-2025

President: Lois Duke

Phone: 780-832-0815

Vice President: Tania Calliou-Horseman

Phone: 780-518-3082

Activities Coordinator: Monique Hommy

Phone: 780-831-5331



Photo credit: Teepees in Northeast BC, 2016 (Alisa Froh)



Photo credit: "Fort St. John" by the Province of British Columbia licensed under CC BY-NC-ND 2.0. [www.flickr.com/photos/bcgovphotos/15791242939](http://www.flickr.com/photos/bcgovphotos/15791242939)

## PROPHET RIVER FIRST NATION

Health Director: Kelvin Fehr

Community Health Rep: Donna Tsakoza

Hours of Service: 9:00-4:30 Monday-Friday

Phone: 250-773-6555

Distance to Fort Nelson: 100 km

Distance to FSJ: 292 km

Language: Beaver

Services	Availability
Physician Clinic	
Public Health Nurse	Once a month
Patient Travel	Monday-Friday 9-4:30
Youth Mental Health Clinician	When needed
Social Worker	3 days a week
Optometry Clinic	Once a year
Flu Shot Clinic	Once a year
Homemaking	As needed
First Responder Program	7 days a week

## SAULTEAU FIRST NATIONS

Health Director: Cheryl Martens

Community Health Rep: Deshana Sanderson

Hours of Service: 8:00-4:30 Monday-Thursday

Phone: 250-788-7280

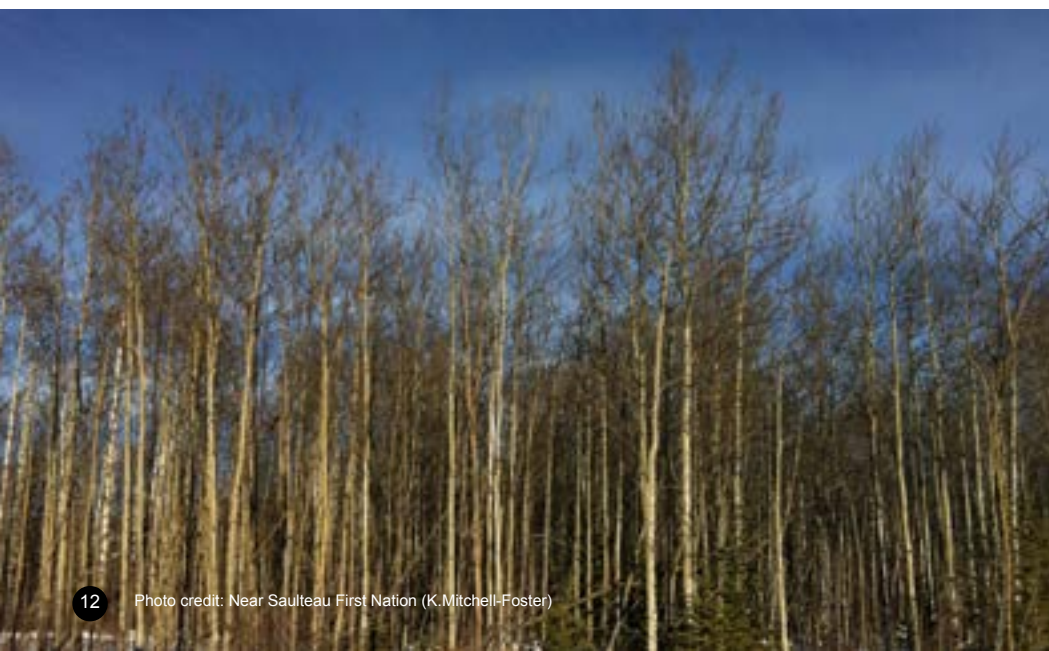
Fax: 250-788-7251

Distance from Chetwynd: 25 kms

Distance from FSJ: 1.5 hours

Language: Cree and Saulteau

Services	Availability
Physician Clinic	
Community Health Nurse	Monday-Thursday 8-4:30
Community Health Rep	Tuesday-Wednesday 8-4:30
Patient Travel	Monday-Thursday 8-4:30
Mental Health and Addictions Worker	Monday-Thursday 8-4:30
Home Support	Mondays & Thursdays 8-4:30
Home Care Nurse	Monday-Thursday 8-4:30
Family Support Worker	Monday-Thursday 8-4:30
Home Making	Monday-Thursday 8-4:30
Family Life Skills Worker	Monday-Thursday 8-4:30
Optometry clinic	Once a year
Foot Clinic	Once every 2 months



## WEST MOBERLY FIRST NATIONS

Health Director: Patricia Hoard

Community Health Rep: Clorrisa Bigfoot

Hours of Service: 8:00-4:30 Monday-Friday

Phone: 250-788-3622

Fax: 250-788-9792

Distance from Chetwynd: 30 kms

Distance from FSJ: 1.5 hours

Language: Cree and Beaver

Services	Availability
Physician Clinic	Can access Saulteau Physician Clinic
Registered Nurse	Twice a month
Patient Travel	Monday-Friday 8-4:30
Youth Mental Health Clinician	When needed
Flu Shot Clinic	Once a year
Home Support	Twice a week
Family Support Worker	Monday-Friday 8-4:30
Optometry clinic	Once a year



## ABORIGINAL ORGANIZATIONS AND RESOURCES

### Fort St. John

Fort St. John Friendship Center ..... 250-785-1541  
 Fort St. John Métis Society ..... 250-785-1541  
 Native Court Worker ..... 1-877-811-1190 ext. 376  
 Treaty 8 Tribal Association ..... 250-785-0612  
 Fort St. John Native Housing Society ..... 250-785-4900  
 North East Native Advancing Society (NENAS) ... 250-785-0887  
 Nenan Dane zaa Deh Zona Children and  
 Family Services ..... 250-785-2151  
 FNHA General Inquires ..... 1-855-550-5454  
 FNHA Community Engagement Coordinator ..... 778-256-5072  
 FNHA Fort St. John Nursing Office ..... 250-787-0298  
 Off-Reserve Non-Insured Health Benefits 250-785-0612 ext.228  
 Mental Wellness and Substance Use  
 Mobile Support Team..... 250-261-3201

### Dawson Creek

Nawican Friendship Center ..... 250-782-5202  
 Aboriginal Family Resources Society .....250-782-1169  
 Northeast Métis Society ..... 250-782-2710  
 Nenan Dane-zaa Deh Zona Children and  
 Family Services ..... 250-787-2151

### Chetwynd

Tansi Friendship Center ..... 250-788-2996  
 Moccasin Flats Métis Society ..... 250-401-7296

### Fort Nelson

Fort Nelson Aboriginal Friendship Society ..... 250-774-2993  
 Nenan Dane-zaa Deh Zona Children and  
 Family Services ..... 250-787-2151



## ABORIGINAL HEALTH

# Sharing patient information with health care staff in First Nations communities

## GUIDELINES FOR NORTHERN HEALTH

### INTRODUCTION

This document will provide clarification about sharing patient information for First Nations people who live in First Nations communities. Communicating relevant patient information to health care staff in First Nations communities is very important for the continuity of services and to avoid risks to the health and safety of the people to be served.

First Nations people who live in First Nations communities in the north receive many of their acute care services within Northern Health (NH) hospitals and facilities. After being discharged from a NH facility, people return to their home community where follow-up services are provided by the health care staff in the First Nations community.

Informing health care staff in First Nations communities that a person has been discharged and is returning home allows for timely follow-up. Providing specific information about the person's follow-up needs ensures safe and continuous care for that person and their family.

You can and should share information with health care providers in First Nations communities, once a patient has given verbal consent for you to do so.

### CONSENT TO SHARE PATIENT INFORMATION<sup>1</sup>

In order to share relevant patient information with health care providers in First Nations communities, confirm with the patient what community they will be returning to after leaving the hospital.

1. Explain the importance of sharing relevant information with the community health care staff for their safety and continuity of care.
2. Ask the patient if you can contact the health care staff (indicate the provider's title/position) in the patient's community in order to share relevant information and to include the health care staff in planning the patient's transition home and their follow-up care.
3. Document the conversation and the outcome in the patient file.

### ABORIGINAL PATIENT LIAISONS

Ten Aboriginal Patient Liaisons<sup>2</sup> (APLs) are located across the north at the following NH facilities and are available to assist with discharge planning, patient transitions, and connecting with First Nations and Aboriginal communities:

Bulkeley Valley District Hospital	250-847-5211
Chetwynd Hospital and Health Centre	250-788-7300
Dawson Creek and District Hospital	250-782-8501
Fort St. John Hospital	250-261-7418
GR Baker Memorial Hospital	250-985-5812
Lakes District Hospital	250-692-2474
Mills Memorial Hospital	250-638-4085
Prince Rupert Regional Hospital	250-624-2171
University Hospital of Northern BC	250-565-2364
Wrinch Memorial Hospital	250-842-4666

APLs and Aboriginal Patient Navigators are also located in regional health authorities throughout the province to assist with patient transfers to facilities outside of NH.



## ENDNOTES

- 1 Health care information can be shared as permitted by 33.2(a) and 34 of the Freedom of Information and Protection of Privacy Act of British Columbia: [www.bclaws.ca/Recon/document/ID/freesider/98165\\_00](http://www.bclaws.ca/Recon/document/ID/freesider/98165_00)
- 2 For up-to-date contact information for Aboriginal Patient Liaisons, visit: [northernhealth.ca/YourHealth/AboriginalHealth/WhatWeDo/AboriginalPatientLiaisonProgram.aspx](http://northernhealth.ca/YourHealth/AboriginalHealth/WhatWeDo/AboriginalPatientLiaisonProgram.aspx)

***This document has been reviewed by the Northern Health Privacy Office and the Northern Health Risk and Compliance Office.***

Acknowledgement to Aboriginal Health, Interior Health, for sharing *Brief Facts: Patient Information Sharing with First Nations Health Care Staff*.



© 2016 Northern Health. This publication may be reproduced for non-commercial use, in full or in part, without permission provided the source is fully acknowledged.

Recommended citation: Aboriginal Health. (2016). *Sharing patient information with health care staff in First Nations communities: Guidelines for Northern Health*. Prince George, BC: Northern Health.

This document is available online at  
[www.northernhealth.ca/YourHealth/AboriginalHealth](http://www.northernhealth.ca/YourHealth/AboriginalHealth)

Aboriginal Health, Suite 600 - 299 Victoria Street, Prince George, BC V2L 5R8  
 T 250-649-7226 • F 250-565-2640 • [aboriginal.health@northernhealth.ca](mailto:aboriginal.health@northernhealth.ca)





© 2019 Northeast Aboriginal Health Improvement Committee. This resource may be reproduced for non-commercial use, in full or in part, without permission provided the source is fully acknowledged. This resource was developed by the Northeast Aboriginal Health Improvement Committee (AHIC) with financial support from Aboriginal Health, Northern Health. The views and information within do not necessarily represent those of Northern Health. To request copies of this document or to suggest a correction or improvement, please call (250) 261-7418